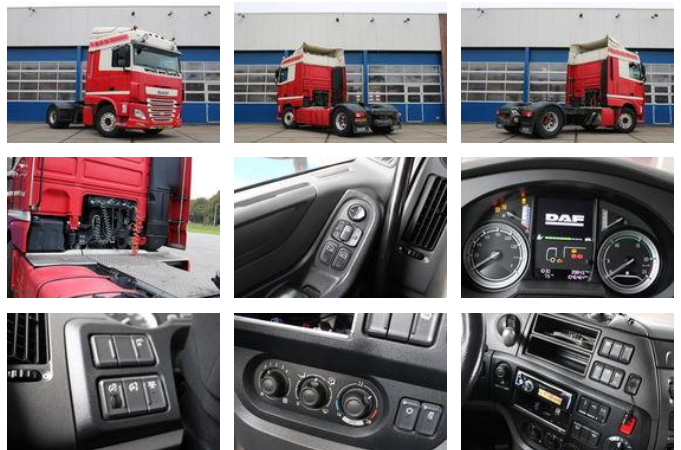


## DAF XF 460 4x2 Retarder - PTO - Full Air - Retarder

### General features

|                            |                 |
|----------------------------|-----------------|
| Brand                      | DAF             |
| Model                      | XF 460          |
| Subcategory                | Cab over engine |
| Licence plate              | 42bhf8          |
| Odometer reading           | 1.046.464km     |
| Construction year          | 2016            |
| Date of first registration | 18-05-2016      |
| Color                      | White           |
| Condition                  | Used            |
| General condition          | Good            |
| Fuel                       | Diesel          |
| Emissionclass              | Euro 6          |



### Characteristics

|               |               |
|---------------|---------------|
| Empty weight  | 8.065kg       |
| Load capacity | 12.435kg      |
| Max. weight   | 20.500kg      |
| Length        | 616cm         |
| Width         | 255cm         |
| Cabin         | Sleeper cabin |

Cylinder contents

12.902cc

# DAF XF 460 4x2 Retarder - PTO - Full Air - Retarder

## Technical specifications

|                    |           |
|--------------------|-----------|
| Number of axes     | 2         |
| Axis configuration | 4x2       |
| Transmission       | Automatic |
| assets             | 340kw     |

## Description

Für weitere Informationen oder eine Besichtigung erreichen Sie uns unter: 06-38681717 Eine Anzahlungnahme ist möglich. Tipp- und Druckfehler in der Anzeige vorbehalten. Garagebedrijf Aangenend B.V. Rijksweg noord 1A 5951AE Belfeld

## Accessories

- Air conditioning
- Aluminium fuel tank
- Central locking
- Electrically operated windows
- Refrigerator
- Alloy wheels
- Air horn
- Air suspension
- Fog lights
- PTO
- Radio/cassette player
- Radio/CD player
- Particulate filter
- Speed limiter
- Stability control
- Vehicle heater
- Heavy duty engine brake
- Xenon lighting
- Visor
- Cabin
- Central lubrication system
- Cruise control
- Catalyst
- Air suspension system
- Disc brakes
- Trailer coupling
- Toilet
- Power steering
- Passenger seat
- Airbags

- Light (metallic) rims
- Metallic paint
- Radio/Cd/Audio system
- Central doorlocking
- Electric windows
- ABS
- EBS
- Climate control
- Retarder
- Heater
- All wheel drive
- Alarm
- ASR (Anti-Slip Regulation/Traction Control)