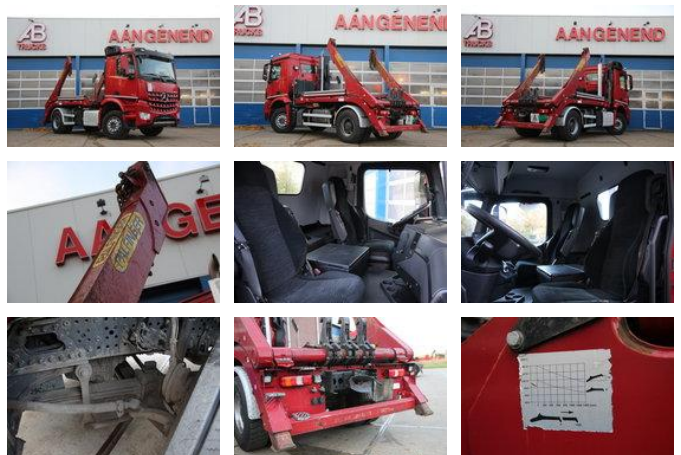


## Mercedes-Benz AROCS 1848 - 219 TKM - 4x2 - PALFINGER 14T - RETARDER - LED LIGHTS

### General features

Brand	Mercedes-Benz
Subcategory	Container
Container system	cable
Odometer reading	219.435km
Construction year	2020
Date of first registration	23-03-2020
Color	Red
Condition	Used
Fuel	Diesel
Emissionclass	Euro 6



### Characteristics

Empty weight	7.615kg
Load capacity	36.385kg
GVW	76.115kg
Cabin	No
Serial number	W1T96420010431550

# Mercedes-Benz AROCS 1848 - 219 TKM - 4x2 - PALFINGER 14T - RETARDER - LED LIGHTS

## Technical specifications

Transmission	Automatic
--------------	-----------

---

Engine output	350kw
---------------	-------

## Accessories

- 2 pedal control
- Trailer coupling
- Adaptive Cruise Control
- Android Auto
- Apple CarPlay
- Automatic
- Bluetooth
- Onboard Computer
- Differential Lock
- See-through pole
- ESP
- Closed cabin
- Handlebar heating
- Hill Assist
- Isofix
- Keyless Go
- Load protection grid
- Air Suspension Seats
- Motorbike cover
- Panoramic Roof
- Rain Sensor
- Sunroof
- Hosegroups
- Heated Mirrors
- Voice Control
- Immobilizer
- Telescopic forks
- Towbar
- Spotlight rear
- Spotlight front
- Front window
- Forks with scale
- Windshield
- Saddlebag
- Seat heating
- Rotating beacon
- Reversing camera
- Air conditioning

- Leaf spring suspension
- Central locking
- Electrically operated windows
- Low-noise
- Toolbox
- Refrigerator
- Air horn
- Air suspension
- Fog lights
- PTO
- Radio/cassette player
- Radio/CD player
- Spare wheel
- Particulate filter
- Side skirts
- Speed limiter
- Stability control
- Vehicle heater
- Television
- Coupling
- Heavy duty engine brake
- Spotlights
- Xenon lighting
- Side door
- Visor
- Cabin
- Central lubrication system
- Cruise control
- Grip arm hydraulics
- Hammer hydraulics
- Air suspension system
- Tail lift
- Navigation
- Parkassist
- Disc brakes
- Trailer coupling
- Power steering
- Passenger seat
- Airbags
- Metallic paint
- Radio/Cd/Audio system
- Central doorlocking
- Electric windows
- ABS
- EBS
- Climate control
- Retarder
- Heater
- Alarm
- ASR (Anti-Slip Regulation/Traction Control)